

Supplementary Materials on Consolidated Financial Results for FY ended March 2016

(Twelve Months ended March 31, 2016)

May 13, 2016



Mobile Telecommunication Business



Enterprise Solution Business



Settlement Service & Other Business

Disclaimer

*This material contains statements about the future performance of T-Gaia, which are based on management's assumptions and beliefs taking information currently available into consideration. Therefore, please be advised that T-Gaia's actual results could differ materially from those described in these forward-looking statements as a result of numerous factors, including general economic conditions in T-Gaia's principal markets as well as other factors detailed from time to time.



Corporate Outline

(As of March. 31, 2016)



Head Office : Ebisu Neonato 14-18F, 4-1-18, Ebisu, Shibuya-ku, Tokyo
 TG Offices : Head Office, Three Regional Head Offices and Seven Branch Offices

Capital : 3,154 million yen No. of Employees : 4,292

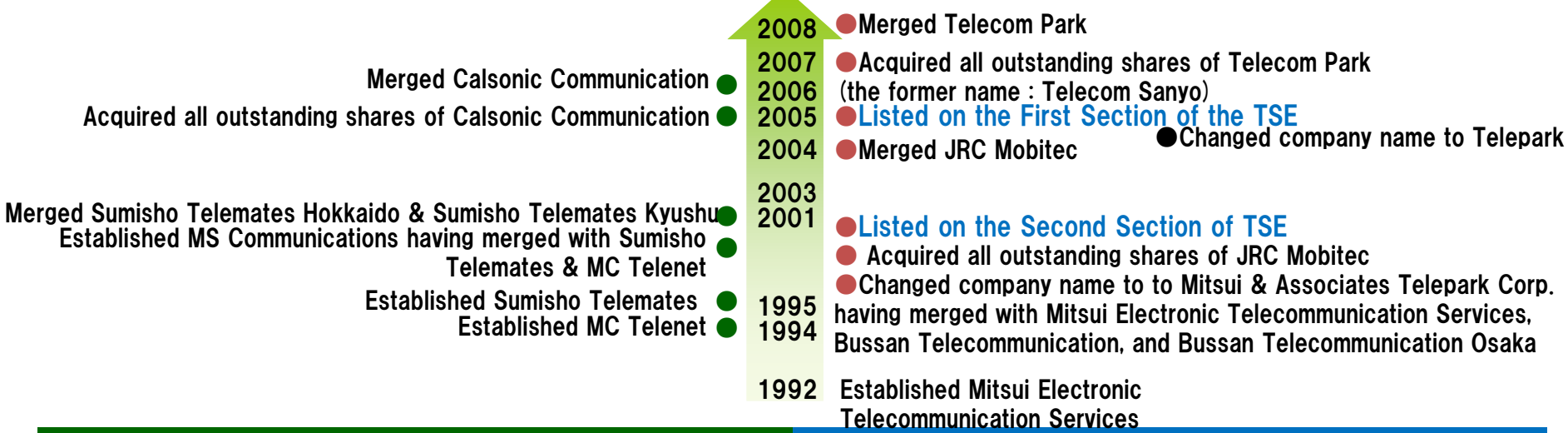
- Business
- (1) Sales & distribution of mobile phones
 - (2) Brokering of telecommunication services incl. broadband access & optical fibers
 - (3) Prepaid settlement services, overseas business & others

Major shareholders: [Sumitomo Corp. and so on](#)
 Related companies: Four domestic companies and companies in China & Singapore

History

June 2015: Set up Present Management

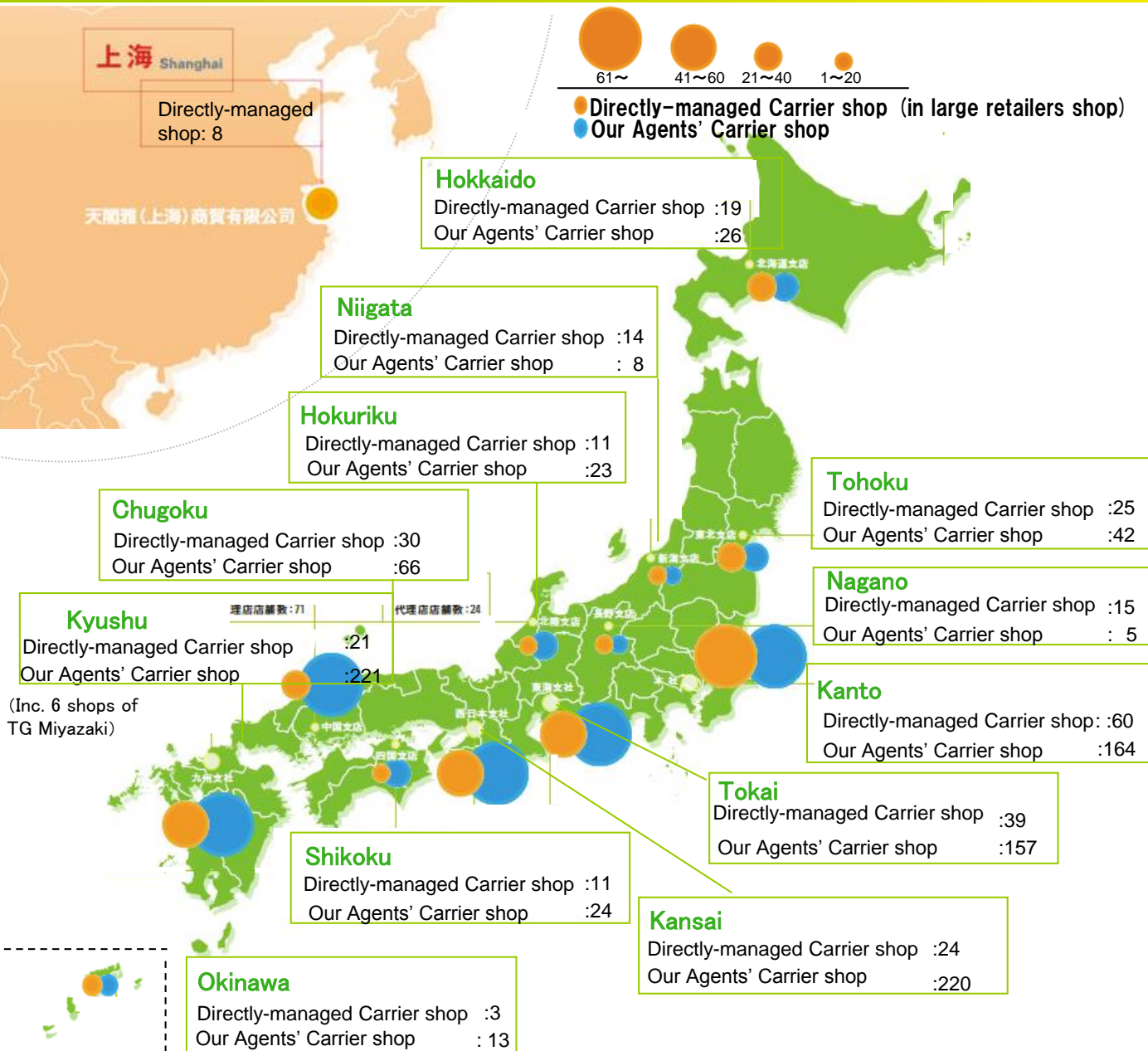
October 2008: Newly-established T-Gaia Corporation



MS Communication Company, Limited

Telepark Corporation

Diversified Domestic & International Sales Channels



Example of Carrier Shop [Directly-managed shop]

Docomo Shop
■ 279
 [Incl. 170]

au shop
■ 430
 [Incl. 64]

Softbank Shop
■ 459
 [Incl. 37]

Y! mobile Shop 73

China Unicom Shop in Shanghai
 8 [Incl. 8]

Total: 1,249

[Directly-managed Shop **280**]

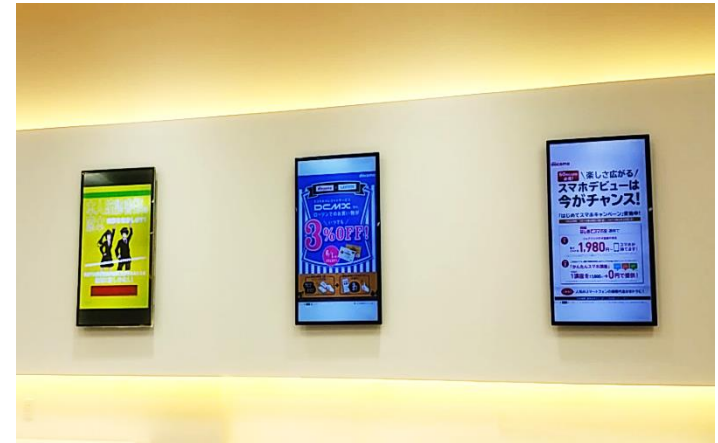
As of March 30, 2016

Carrier Shops with the Leading-edge Facilities

Docomo Shop Higashi Umeda (in Osaka Pref.)



Provision of various portable tablets



Introduction of digital signage



Special table for reducing waiting time



Space for waiting & battery charge

Products sold in “Smart Labo” shops

Example of Product

- Variety of Stylish Products

- Our original smart-phone cases



- Very Popular Character Goods



- Products related to Particular Hobbies



Key Financial Index

Full-year (Unit: Million yen)	2008/3 TP	2009/3 TG	2010/3 TG	2011/3 TG	2012/3 TG	2013/3 TG	2014/3 TG	2015/3 TG	2016/3 TG
Net Income	41.9	63.6	81.3	75.5	79.3	65.8	68.3	77.4	94.9
Shareholders' Equity (Net Assets)	186.1	259.4	310.6	356.4	280.5	281.7	235.9	291.0	358.1
Return on Equity (ROE)	24.1 %	28.6 %	28.5%	22.7%	28.3%	23.4%	26.4%	29.4%	29.3%
Dividend on Equity (DOE)	9.5 %	10.3 %	10.8 %	8.5 %	9.8%	10.1%	10.0%	9.8%	9.1
Operating Income to Net Sales	2.0%	2.9%	2.7%	2.4%	2.1%	1.6%	1.8%	2.2%	2.5%

※TP stands for Telepark Corporation and TG stands for T-Gaia Corporation.

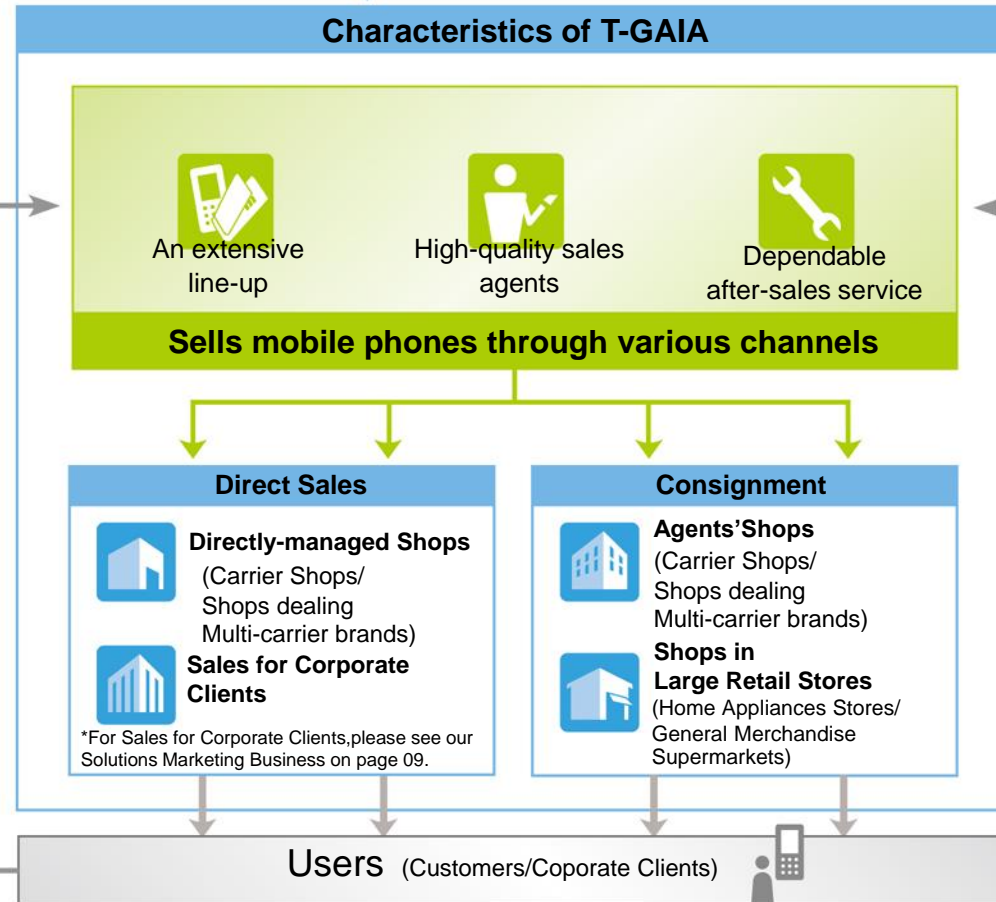
※Each figure from 2005/3 to 2011/3 has been based on Non-consolidated basis.

Our Role in Mobile-phone Industry in Japan

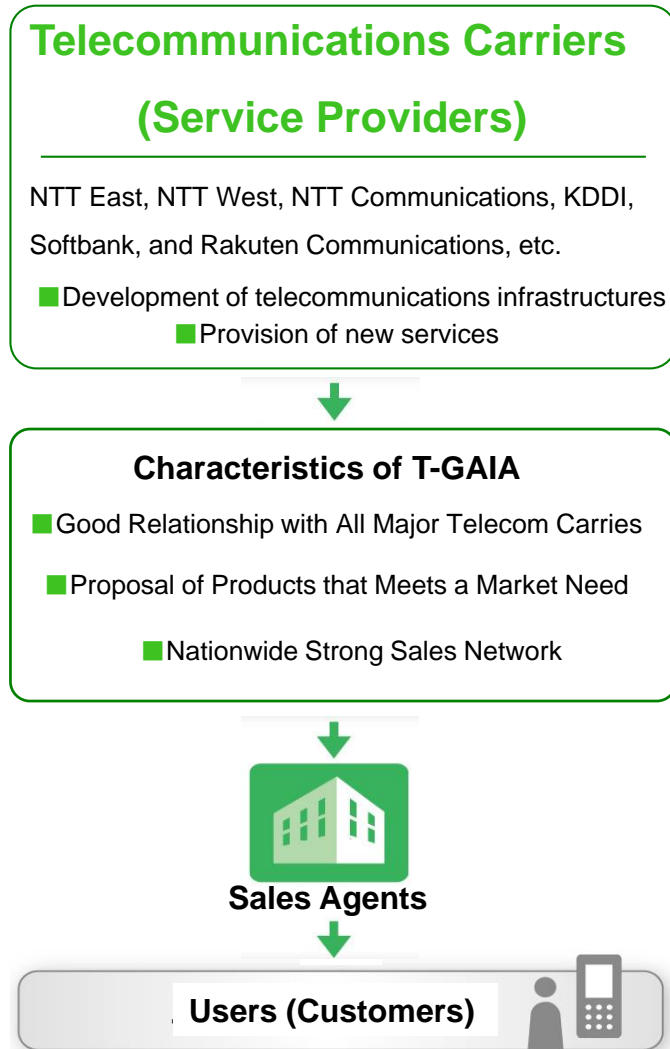
Mobile-phone/
Smart-phone
Manufacturers



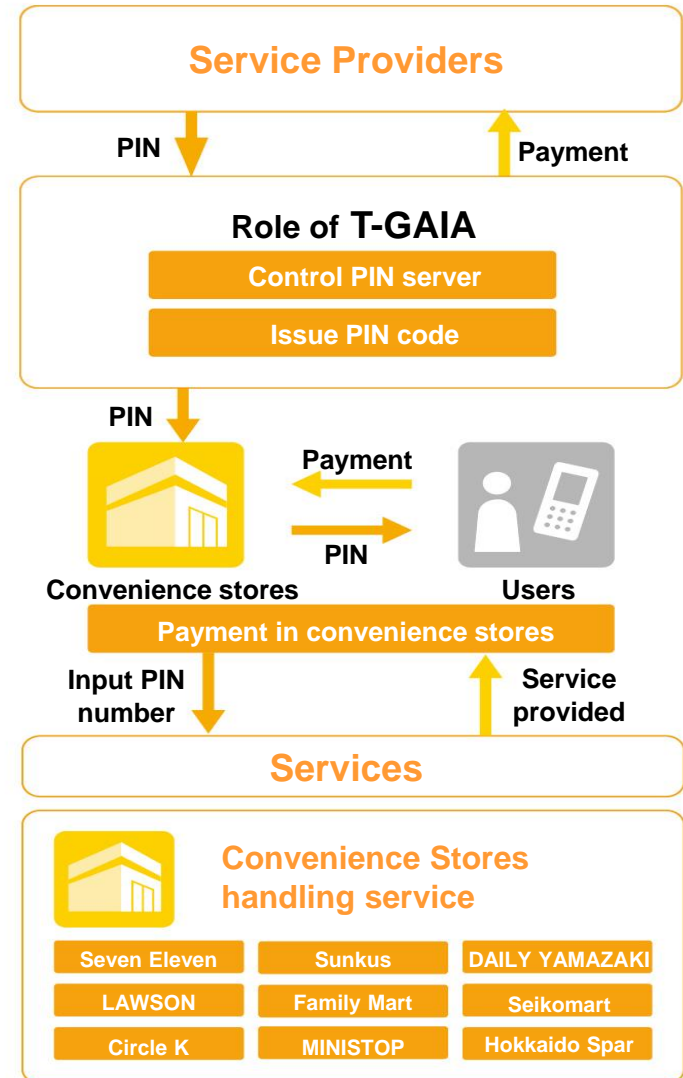
Content
Providers



Our Role in Fixed-line & Settlement Service Business



● Framework of Fixed-line Business



● Framework of Prepaid Settlement Service
(Sale of PIN: Personal Identification No.)